

Concise Annual Report **2018**



Providers of

~~**SAFESTART**~~ ~~**RYDA**~~ ~~**GOOD2GO**~~ ~~**ROADGUIDE**~~ ~~**BETTERDRIVER**~~

VISION MISSION VALUES

To provide evidence-based road safety education that saves lives by supporting the development of a road safety culture across the generations

- **Best practice meeting individual needs and supporting behaviour change through interactive learning, local relevance, age appropriate content, and promoting social and peer responsibility;**
- **Empowering informed decision making in supportive environments to create enduring change with lifelong learning tools of problem solving and self-awareness of personal risk;**
- **Sustainability through broad community engagement with stakeholders including schools, local communities, volunteers, corporations, government and police;**
- **Continual program improvement through research and evaluation**

Road Safety Education Limited (RSE) is a not-for-profit organisation with a commitment to the reduction of road trauma through the delivery of evidence-based road safety education programs. Our flagship program RYDA, has been providing novice drivers and their passengers throughout Australia and New Zealand, with lifesaving knowledge and skills for over fifteen years.

Youth road trauma is a community problem that needs a whole of community response. RSE is in a unique position to bring together all the essential elements to provide an effective and highly successful road safety education program for young people.

CONTENTS

SECTION 1

PERFORMANCE HIGHLIGHTS

Chair's Message	3
CEO/Managing Director's Report	4
Our Impact	6
RSE Program Guide	8
Program Design - Best Practice	9
Program Evaluation	10

SECTION 2

BUSINESS REVIEW

ROAD SAFETY EDUCATION LTD (AUS)	
Company Directory	12
Report of the Directors	13
Financial Results at a Glance	17
Financial Report	18

ROAD SAFETY EDUCATION LTD (NZ)

Company Directory & Report	
of the Directors	20
Financial Report	21

ROAD SAFETY EDUCATION FOUNDATION

Directory & Trustee's Report	22
Financial Report	23

SECTION 3

OUR COMMUNITY

The Road Safety Education Team	25
Advisory Council	26
Ambassadors	27
Corporate Partners	28
Community Partners	29
Other Sponsors & Supporters	30
Group Directory	32

2018

Concise Annual Report

Pages 3-5

Chairman and CEO/ Managing Director's Reports

Chair, Kerry Chikarovski and CEO/MD, Terry Birss reflect on the year's achievements, opportunities for growth and the direction for the year ahead.



Pages 6-7

Our Impact


RSE's RYDA program makes a broad impact across communities in Australia and New Zealand

Pages 9-11

Program Design and Evaluation

Our programs follow best practice and are evaluated to measure retention of knowledge and changes in attitude and intended behaviour



A woman in a high-visibility vest is leaning into the open door of a car, smiling and talking to two young women who are also smiling. The woman in the vest has 'WDA' and 'tor' visible on her vest. The young women are wearing school uniforms. The background is a blurred outdoor setting.

RSE IS A LEADING LEARNING ORGANISATION AND THE ONLY NATIONAL ROAD SAFETY EDUCATOR OF YOUTH



We got to hear from the past experiences of someone involved in a serious accident first hand, and discuss/analyse the factors that caused the accident. It was especially engaging as we had to draw upon our knowledge of the crash factors [and help] to fill in the blanks about the nature of the crash that the guest speaker had described to us.

- Campbell, The Gap High School



> CHAIR'S MESSAGE

Kerry Chikarovski



I am very pleased to report that this year Road Safety Education Limited (RSE) has again demonstrated an ongoing commitment to providing industry leading evidence based road safety education for our novice drivers and young passengers. We successfully implemented initiatives with the RYDA Program to support sustained behaviour change through increased interactive learning and provided educational resources that will be reinforced across time back in the school classroom; all designed to maintain RSE at the forefront of supporting the development of a road safety culture across the generations.

The release of RYDA 4.0 in early 2018 was the end result of a comprehensive review to ensure that the RYDA Program continued to be guided by road safety evidence, compatible with government messaging and delivered using the latest educational techniques in a way that complements the school curriculum. In particular RSE sought to incorporate the latest research findings surrounding the use of personal stories in road safety education and the most effective approach to incorporating consequences as an agent for behaviour change. The review resulted in the development of a new session where students are appointed as 'crash investigators' tasked with identifying the details of the crash. This innovative approach taken by RSE gives students a deeper understanding of the factors that impact a road crash and helps them identify personal, community and government strategies that could prevent similar outcomes in the future.

It has long been recognised that education leading to deep understanding and behaviour change does not happen in a day and that teachers are in the best position to ensure that the road safety messages provided at RYDA are reinforced by further classroom learning. To assist teachers in this task, RSE has developed and recently released a Teacher's Companion to the RYDA Program. This new resource is an innovative initiative by RSE and demonstrates our

commitment to work in partnership with schools to help guide their students to become responsible citizens who can make a real difference to their personal safety and that of others on the road.

A key to the success of RSE and the RYDA Program is the exceptional level of community engagement variously achieved through Governments, local Councils, Police, parents and the broad school community. Again, this year RSE was a very active participant in National Road Safety Week with many related initiatives involving the "Yellow Ribbon" as a tangible symbol to encourage all in the community to make a commitment to road safety.

Having a program that is affordable and accessible is essential and this would not be possible without the financial and in-kind support of many organisations, especially our Founding Partner BOC and Major Sponsors Toyota Australia, New Zealand Steel, Bridgestone, MTAA Super, AMI and Boral. We also thank the many hundreds of Rotary Clubs and thousands of Rotary volunteers who contribute so much to the success of RYDA in Australia and New Zealand.

The continual development of RYDA to maintain best practice standards and this year's improvement in our financial position is a real credit to our CEO Terry Birss, his management team and staff and I join my fellow directors in conveying my appreciation for their ongoing achievements. I also wish to convey my appreciation to my fellow Directors for their support and to our many supporters and stakeholders for their ongoing commitment to our vision of "Zero Youth Road Trauma".

A handwritten signature in blue ink, appearing to read 'Kerry Chikarovski', written over a horizontal line.

**Kerry Chikarovski, Chair
December 2018**

Terry Birss

We continue to play an important role in helping young Aussies and Kiwis stay safe on our roads.

Our flagship program, RYDA, is aligned to the senior secondary school curriculum and is designed to play an integral part in the continuum of learning. RYDA front-loads students' understanding of road safety with knowledge and tools that don't come from books, websites or driving lessons.

This year we released the Teacher's RYDA Companion, which is now supporting teachers on the program day and back in the classroom, extending the resonance of RYDA messages.

We measure the efficacy of our role through our corporate objectives - by participation at RYDA, its evaluated effectiveness, the community's awareness of RYDA, and the financial resilience of our organisation which supports our charitable but professionally driven intent.

There are now more than 550,000 RYDA graduates and each year we hold over 2,500 RYDA workshops. From the brand-new solo drivers to the young men and women who attended RYDA more than a decade ago, RYDA graduates are all contributing to a safer environment on our roads.

Best learning outcomes are achieved where the evidence has been converted into effective education and messages are repeated across time – incorporating behavioural change techniques and allowing continual evaluations to inform enhancements. This is fundamental to RSE's commitment to 'best practice', and the measurement of program efficacy.

RSE's programs are under the guidance of our Advisory Council of renowned worldwide experts. RSE is skilled at translating this evidence into educational techniques that are innovative, focused and evaluated for improved outcomes. Another important measurement is our commitment to, and investment in, program research, development and quality assurance. During the year, research informed a recalibration of our approach to personal stories and during term one of 2018, we released RYDA version 4.0, incorporating a replacement session, 'Crash Investigators'. This new and innovative approach has increased student engagement with a crash survivor, which through a process of student inquiry, realigns the emphasis to how the crash could have been avoided, or its severity reduced.

Our current investment in programs stands at \$314,349 - up 36% from last year.

The effectiveness of RYDA can also be measured through pre and post program evaluations which seek to measure, not only a retention of knowledge but the motivation to use it.

Increased knowledge was recorded for all questions tracked across three months. For example when asked what doubling speed does to the stopping distance of a vehicle correct answers went from 40% pre attendance to 78% three months post attendance.

Importantly, we also saw encouraging trends in self-reported intentions to change behaviour. Looking at mobile phones, 42% of students said they would use their phones hands-free before attending RYDA. Three months post, the number had reduced by 30%.

Seventy one percent (71%) of attending teachers report that they too have an increased awareness of road safety issues, with 99% rating the program worthwhile or very worthwhile for their students.

OUR COMMUNITY OF SUPPORT

The RYDA program is unique – it is a professionally developed and delivered product embedded in communities, whose members support RSE in their hundreds. Our partners also help make RYDA affordable and accessible in almost 100 RYDA urban, rural and regional venues across Australia and New Zealand. Our community partner, comprised of Rotarians in hundreds of Rotary clubs, RSE's corporate partners, and other official supporters, underpin our investment in both the quality and delivery of the RYDA program.

Changed economic conditions over the past three years has meant that RSE has not been able to offer as many program places as in previous years. However, it is now very reassuring to report that additional partners; Bridgestone (Aus & NZ), MTA Superannuation (Aus), AMI (NZ) and since year end, Boral (Aus) have joined our long-standing partners; BOC (Aus & NZ), Toyota (Aus) and NZ Steel (NZ), will significantly help underpin RSE's progress. (Read more later in this annual report).

OUR FINANCIAL PROGRESS

Reflecting the economic environment and available funding, this year revenues were fairly flat at \$3.42M (0.5% increase). A reduction in program subsidies of 1.4% and in expenditure of 3.8% has enabled us to report a reasonable financial surplus of \$68K (LY loss \$49K), the first in a number of years. (Read more later in this annual report). In this context, we remain committed to Good2Go (the in-car coaching program, a follow-on from RYDA) and RoadGuide for novice driver supervisors (typically parents of RYDA students). These programs are funding dependent.

THE LINK WITH GOVERNMENTS (AUS & NZ)

Over the past decade fatalities in the 17-25 age group have reduced by about 40%. While any death is unacceptable, this is a dramatic reduction due to a number of factors, including the graduated licensing system, safer cars, and according to our evaluations, RYDA. But sadly, since 2016, we have seen a concerning up-spike in national road tolls. The Commonwealth government's recent Inquiry into the National Road Safety Strategy found 'implementation failure' and the virtually certain outcome, that the plans of all governments to reduce road trauma will not be achieved.

RYDA is offered in 9 jurisdictions (across Aus and NZ), each of which has its own road rules and approach to road safety

education. The governments of Tasmania and Queensland are strong contributors to the program but overall, variable government support, is challenging for us as a national organisation, seeking consistent standards and learning outcomes. This is also a contributing factor in determining the number of RYDA places available to students each year.

We know that the safest drivers on our roads are L platers but as soon as novice drivers go solo, overnight they are many times more likely to crash than drivers who are more experienced. Education is a key factor in reducing the price of road trauma paid by inexperienced drivers. At RYDA, students gain the huge benefit from front-loading their road safety knowledge without exposure to road trauma.

LOOKING TO THE FUTURE

How do we increase participation in RYDA?

Currently about one in four eligible students attend RYDA in Australia, and in New Zealand, one in seven. Governments have the primary responsibility for road safety, but theirs, is a largely indirect role implemented via public policy. For example, they run advertising campaigns – can they be made more effective? They produce road safety materials for schools – how can they encourage students to use them? Governments spend hugely in this sector. This is not surprising, given that the cost of crashes approaches \$35 billion each year. And that doesn't take account of the trauma suffered by families from more than 100 deaths every month and 100 hospitalised every day.

At RSE our experience is that the community and business are doing much of the heavy lifting, contributing 90% (and governments 10%) of the cost of providing RYDA. Without spending more, governments could be far more effective in supporting road safety education if they channelled their funding to programs that meet their own criteria, in other words to best practice programs.

It is difficult enough for schools and parents to make judgements about road safety education products, but it is misleading when programs that do not meet a government's own standards, are financially supported by them.

What practical steps can government take (without creating any additional burden on the public purse) to reduce road trauma by improved road safety education? Governments can:

- 1 focus their funding on best practice road safety education programs and not support those programs that do not comply with their own published standards;
- 2 adopt a more effective shared responsibility for student well-being by prohibiting students from making decisions beyond their competency and maturity – by not allowing students to opt out of something as crucial as road safety education;
- 3 help schools and parents to make informed decisions about what is good road safety education and what is not, requiring providers to submit evidence of their compliance with government guidelines. It is just not good enough that anyone can provide road safety education - no matter how well intentioned they may be. Governments have a duty to curtail the dissemination of potentially harmful information and stop funding non-complying programs, which denies many students the quality of education they are entitled to;
- 4 provide students with log book credits encouraging attendance at best practice programs.

OUR DEEP APPRECIATION TO RSE'S COMMUNITY OF SUPPORT

At RSE, we have a great opportunity through RYDA to make a difference to the lives of many, many young people. RYDA only happens because of the community of support I have mentioned, and which is also celebrated elsewhere in this annual report. We sincerely thank the Patron of our Foundation under the leadership of Sir William Deane, our directors in Australia and New Zealand under the leadership of Chair, Kerry Chikarovski and the members of our Advisory Council. Their commitment to freely give of their time along with police officers, hundreds of Rotarians, our ambassadors and other volunteers, because of their belief in RYDA, is worthy of great respect.

So too, I thank our management, staff and facilitators for their dedication in running and supporting thousands of RYDA workshops throughout Australia and New Zealand. There are many young people alive today and able to follow their dreams because of you and what you do.



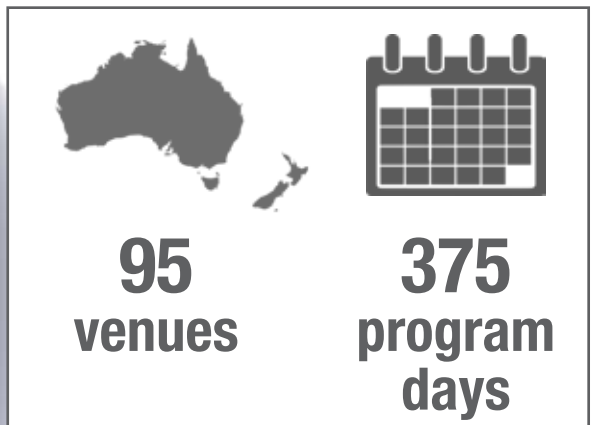
Terry Birss, CEO Managing Director
December 2018

OUR IMPACT ^{F18}

Our Schools



Our Programs



550,000+ students to date

Our People



13 staff



500 Rotary volunteers

from 300 participating Clubs



450 trained facilitators

How we use our funds

Quality assuring RYDA & making it affordable *see Financial Report*



subsidies

30% (\$1.15m) of our total income goes to subsidise students to attend RYDA



program investment

47% of our total expenditure goes to program quality assurance & training (includes our people)

Our Venues

The following venues conducted RYDA Programs in 2017/18

Australia

ACT Canberra | New South Wales Bathurst, Bega, Central Coast (Wyong), Coonabarabran, Cowra, Dubbo, Eurobodalla, Illawarra (Kembla Grange), Leeton, Maitland, Narrabri, Newcastle, Orange, Sydney (Fairfield, Penrith, Sydney Olympic Park, St Ives), Taree, Wagga Wagga, Woolgoolga, Yamba | Queensland Ayr/Home Hill, Brisbane (Bracken Ridge, Chandler, Indooroopilly, Ipswich, Mt Gravatt), Cairns, Caloundra, Darling Downs (Chinchilla, Dalby, Oakey, Pittsworth, Toowoomba, Warwick), Gold Coast (Southport), Gympie, Kingaroy, Mackay, Mareeba, Maryborough, Mossman, Nambour, Noosa, Rockhampton, Townsville | South Australia Adelaide (Flinders University), Barossa Valley (Tanunda), Campbelltown, Clare Valley, Elizabeth, Mount Gambier, Salisbury, Seaton, Victor Harbor, Waikerie | Tasmania Devonport, Hobart, Huonville, King Island, Launceston, Queenstown, Smithton | Victoria Geelong, Leongatha, Melbourne (Broadmeadows, Lilydale, Springvale), Phillip Island

New Zealand

North Island Auckland (Central, North, South, West), Dargaville, Dannevirke, Feilding, Kaitaia, Kapiti, Kawakawa, Levin, Masterton, Okaihau, Palmerston North, Taupo, Whangarei | South Island Ashburton, Balclutha, Central Otago, Invercargill, Lincoln, Marlborough, Nelson, Tasman, Timaru



RYDA

At RYDA, students attend six interactive sessions at a dedicated venue over the course of a school day. In small peer groups, they are challenged to change the way they think about road safety; participating in a stopping distance demonstration, devising personalised strategies, gaining an understanding of their individual risk profile, understanding how they can contribute positively to a car's environment as a passenger and getting tips from road safety experts on how to protect themselves, their friends and family.

Students take part in six interactive sessions.

- **SPEED & STOPPING** On a closed section of roadway, students experience the relationship between speed and stopping distance through practical observation. Students also learn about the importance of car safety features and maintenance.
- **DRIVE S.O.S.** An interactive session promoting citizenship on the road. Using role plays and engaging activities, students look at the road from the perspective of other road users (including heavy vehicles, cyclists and pedestrians), gaining an understanding of their challenges and learning how to predict behaviour and take action to "Drive So Others Survive".
- **THE 'I' IN DRIVE** A reflective session designed to show students how their personality is an important aspect of the total road safety equation. Students self-assess against five personality areas and use this tool to analyse risky situations in cars.
- **ROAD CHOICES** A discussion, routinely led by a Police Officer on key risk areas for young drivers and passengers. Features hard-hitting videos on decision-making and choices.
- **CRASH INVESTIGATORS** A unique opportunity for students to speak to a crash survivor about the event that changed their life. Forming an interview panel, students investigate crash factors, comparing them against the Safe System.
- **GENEVIEVE'S STORY** A true story about a young driver and passenger involved in a road crash. Drawing on the story, students analyse factors including mood, impulse and planning and develop strategies for decision making in risky situations.

SAFESTART

14-15 years

The SafeStart program works with schools to help them develop the citizenship and road safety culture of the students and the school community from the earliest years of high school.

GOOD2GO

17-18 years

A unique opportunity for young drivers to work closely with specially trained instructors to hone their critical thinking, hazard perception, scanning, risk assessment and decision making skills behind the wheel in a real traffic environment.

ROADGUIDE

parents

RoadGuide gives parents the tools to help keep their children safe across a range of risk behaviours.

BETTERDRIVER

corporate employees

RSE's corporate program, BetterDriver is designed to contribute to the culture of safer travel by targeting all employees and developing a better understanding of what road safety looks like.

> BEST PRACTICE IN ROAD SAFETY EDUCATION

Based on (including excerpts) Summary of Changing Mental Models: How recent developments in teaching and learning can be applied to road safety education in schools, M. Chamberlain and P. Hook.

Much research has been done around what is effective and what is not effective in changing people's mental models and behaviours. Whether considering walking, cycling or driving there are clear research findings that show the effect of a variety of approaches. In order to achieve the best outcomes for our students, our practise should reflect these findings.

The design and delivery approach are also very important. While the information useful for students to know as regards to road safety is clear, how this content is taught can have a major effect on how deeply it is learned and to what extent mental models can be changed.

IMPORTANT THREADS

Road safety education needs to be supported through schools, homes and communities. Recent learning theories suggest that to change mental models of young people, we need to consider four key features of our approach:

- 1 Designing activities deliberately linked to how young people learn
- 2 Ensuring relevance that motivates and engages young people
- 3 Creating dissonance and developing deep knowledge
- 4 Developing competencies for making decisions and taking action

AT THE SCHOOL LEVEL

Ideally road safety education needs to happen over time, be school wide and be developmentally appropriate throughout students' school lives. It needs to be based on best evidence about effective teaching and learning.

AT THE CLASSROOM LEVEL

Learning should be interactive and should encourage students to develop social competence and resilience. It should be relevant and focused on individual learning needs.

AT THE STUDENT LEVEL

Students should consider the needs and voices of pedestrians, cyclists, passengers and drivers. They should be encouraged to be active citizens who consider our roads a shared space and should be given opportunities to use their learning to make a difference for themselves and others.

Illustrated below are approaches that work well according to the evidence.

Less effective are those that are not linked with ongoing learning and lack clear goals. Programs that promote early licensure, focus on vehicle emergency handling skills and use scare tactics without providing a parallel positive experience are actually detrimental to students.

Approaches based on best evidence about effective teaching and learning

Focus on individual learning needs

effective
Best Practice
at a glance

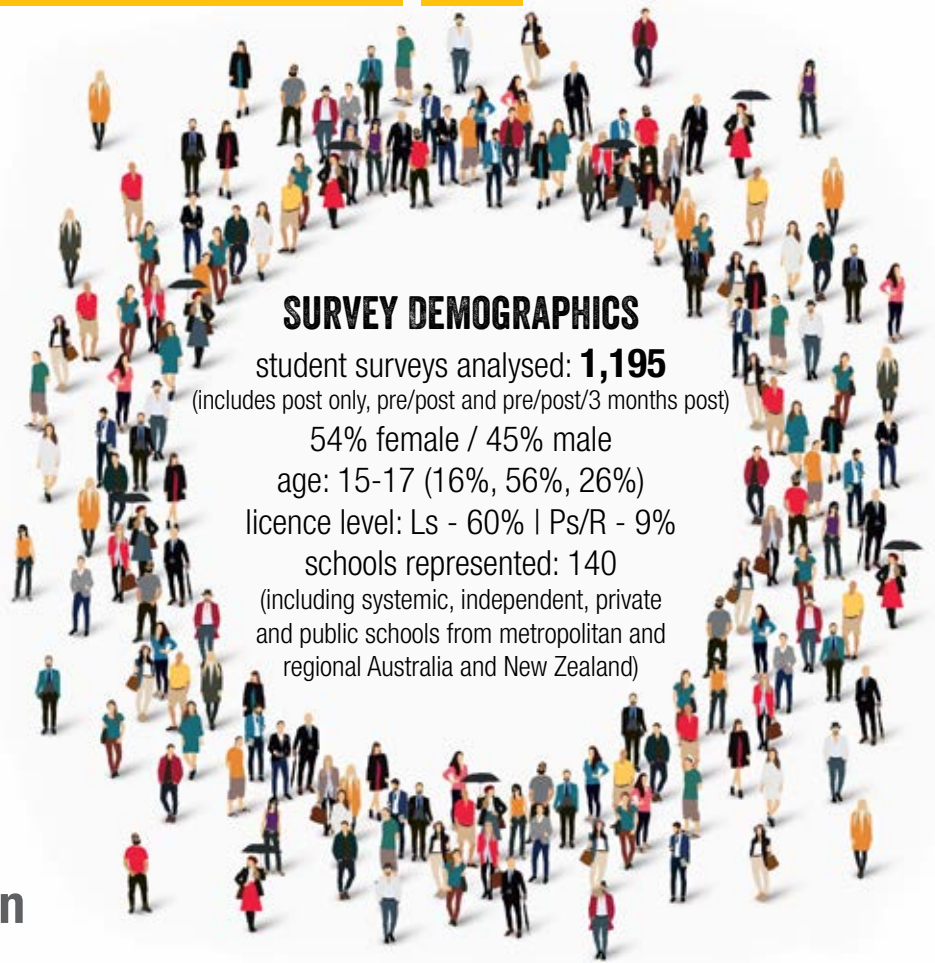
Content which is explicit, appropriate and challenging

Approaches that are evaluated

Targeting causes of risk behaviour

> OUR EVALUATION RESULTS

Under the guidance of our Advisory Council, RSE conduct regular and robust program evaluation designed to measure knowledge retention, attitude shift and intended and practiced behaviour change across time. Evaluation and feedback is gathered from students and teachers pre, immediately post and three month post attendance. The information, along with research and advice from our council, is used to inform RSE's annual RYDA review and update. We are pleased to share an excerpt from our evaluation report.



SURVEY DEMOGRAPHICS

student surveys analysed: **1,195**
(includes post only, pre/post and pre/post/3 months post)

54% female / 45% male

age: 15-17 (16%, 56%, 26%)

licence level: Ls - 60% | Ps/R - 9%

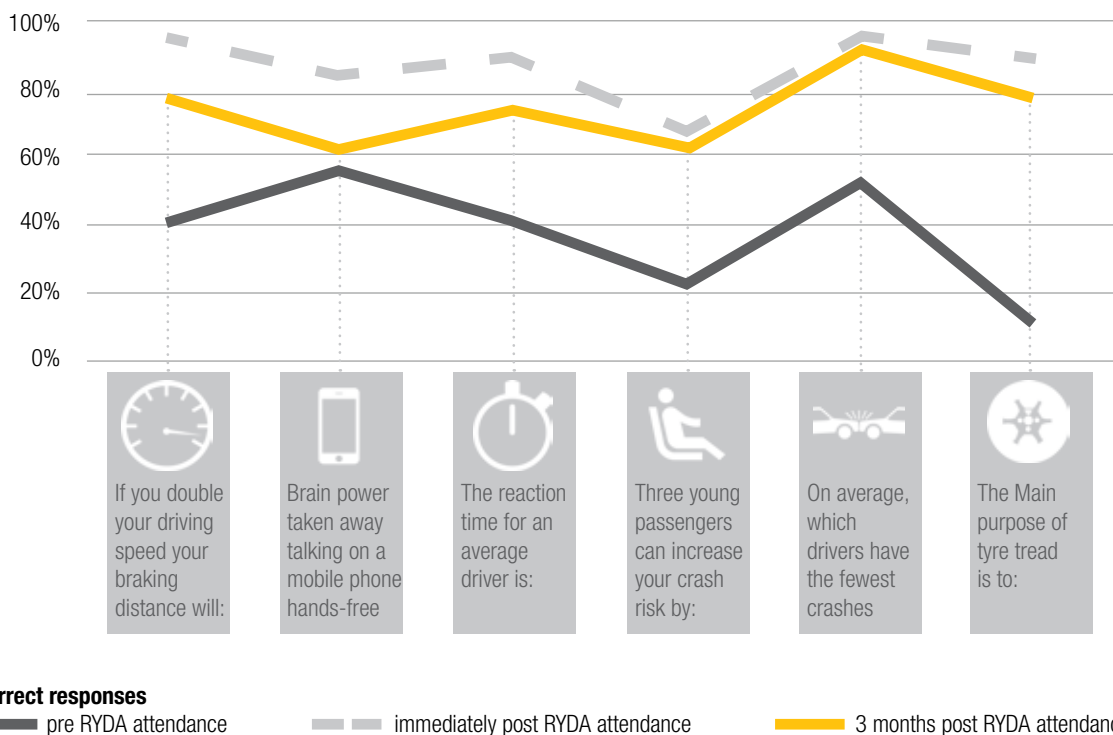
schools represented: 140

(including systemic, independent, private and public schools from metropolitan and regional Australia and New Zealand)

Knowledge Retention

measured across 3 months

As expected, the biggest shift is seen from pre to immediate post, however the three-month post result show a high retention of knowledge in most areas. Questions (abbreviated below) were multiple choice. The correct answer to questions 1-4 was always the highest amount – showing that pre RYDA attendance, students grossly underestimated the impact of these risk areas. The same students were surveyed in all three stages for direct comparison.



Behaviour Change

measured across three months

Looking at intended behaviours, while most came from a reasonably high starting point, we still saw some significant shifts, 3 months post, in students committing to better driving habits. The same students were surveyed in all three stages for direct comparison. Here's a sample of questions where students answered that they would:



▲ **30%**
NOT USE A MOBILE
(EVEN HANDS-FREE)



▲ **22%**
NOT SPEED UP TO GET TO
AN APPOINTMENT ON TIME



▲ **52%**
NOT GIVE A LIFT TO FRIENDS
WHO ARE VERY LOUD & HYPER
question relates to Australian students only

Awareness Shift

measured post attendance

We asked students to indicate their understanding of a number of issues after attending RYDA (compared to before). Below is a sample of questions and the percentage of students who said they were more or much more aware in each area:

The **Safe System** approach and your role within it **81%**

How **personality** factors and **mood** affect risk **79%**

Driving as a **social responsibility** **77%**

How to **reduce distractions** in a car **79%**

How to **plan** critical decisions ahead of time **83%**

95%

of the 850 classroom teachers we surveyed believe RYDA should be compulsory for senior high school students.

60%* said RYDA directly supports the curriculum they teach in class.

* Mainly gathered pre release of RYDA Teacher's Companion

96%

of students surveyed said they would apply the things they learned at RYDA as a passenger or driver

I HAVE APPLIED THE TIPS GIVEN TO ACT AS A GOOD AND SAFE PASSENGER AND ADHERING TO THE 3 SECOND GAP AFTER SEEING HOW MUCH OF A DIFFERENCE IT MAKES - RYDA student, 3 months post attendance

> COMPANY DIRECTORY

Road Safety Education Limited (Australia)

The Company

Road Safety Education Limited (RSE) is incorporated under the Corporation Act 2001 as a public company limited by guarantee.

RSE is a not for profit company that has developed a suite of road safety education programs principally designed for youth. The evidence based RSE RYDA Program is presented by professionals in a community environment supported by partnerships with Rotary Clubs as well as government agencies, corporations and civil society. RSE also provides in Australia, RoadGuide, a program for supervisors of novice drivers and the BetterDriver program for employees of corporations. Through RSE's subsidiary (of the same name) Good2Go, a follow on program from RYDA is available in New Zealand. RSE is a registered authority holder under the Charitable fundraising Act 1991.

National Program Office

Level 2, 10 Julius Avenue
North Ryde
NSW 2113

Directors

Kerry Chikarovski, Chair
A T (Terry) Birss, CEO/Managing Director
John Loughlin
Paul Pixton
Dr Ronald (Keith) Barton (resigned 28/06/18)
Edward (Ned) Boyce
Lynne Wilkinson
Dr Stuart Boland

Executive Officers

CEO/Managing Director
A T (Terry) Birss
Director of Programs
Greg Rappo
General Manager - Education & Communications
Brooke O'Donnell

Bankers

Macquarie Bank Limited
ANZ Banking Group Limited

Auditor

Storey Blackwood
Level 10, 32 Martin Place
Sydney, NSW 2000

Website

www.rse.org.au

> REPORT OF THE DIRECTORS

Road Safety Education Limited & Controlled Entity 30 June 2018

Introduction

Your directors are pleased to present their financial report, together with the financial statements of the Group, being the Company and its controlled entities, for the financial year ended 30 June 2018. The financial report comprises the financial statements and the notes thereto being the statement of profit or loss and other comprehensive income, statement of financial position as at 30 June 2018, statement of changes in equity and statement of cash flows and notes thereto.

Directors

The names of the directors in office at any time during, or since the end of, the year are:

- Albert Terence Birss, CEO/Managing Director
- John Loughlin
- Paul Albert Pixton
- Dr Ronald (Keith) Barton, resigned 28/06/2018
- Edward (Ned) Boyce
- Kerry Chikarovski, Chair
- Lynne Wilkinson
- Dr Stuart Boland

Directors have been in office since the start of the financial year to the date of this report unless otherwise stated.

Principal activities

The principal activities of the Group during the financial year were the provision of road safety education programs for youth which are delivered by professional presenters in partnership with Rotary Clubs in Australia and New Zealand. RSE is a registered authority holder under the Charitable Fundraising Act 1991.

Change in State of Affairs

During the financial period there were no significant changes in the state of affairs of Road Safety Education Limited and Controlled Entities or of its principal activities except as set out in this report and in the financial statements and notes thereto.

Short term objectives

The Group's short term objective is to increase the availability of the RSE Programs throughout Australia and New Zealand in partnership with all sectors of society including the community, government agencies and corporations.

Long term objectives

The Group's long term objective is as the premier road safety educator for youth in Australia and New Zealand to contribute to the reduction of trauma on our roads.

Strategy for achieving the objectives

To achieve these objectives, the Group has adopted the core strategies of:

- A professional educator engaging with the community;
- Delivering quality, evidence based road safety education programs designed to help facilitate a cultural shift in the perception of, and attitude towards, risk by young people;
- Making, over time, RSE's suite of school programs available to all high schools throughout Australia and New Zealand;
- Marshalling and managing resources to facilitate sustainable operations.

After balance date events

No matters or circumstances have arisen since the end of the financial year which significantly affected or may significantly affect the operations of the Group, the results of those operations or the state of affairs of the Group in future financial years.

> REPORT OF THE DIRECTORS (continued)

Road Safety Education Limited & Controlled Entity 30 June 2018

Information on the Directors

Kerry Anne Chikarovski Chair, elected 27/08/2013

Qualifications

B.Ec LLB

Experience

Ms Chikarovski began her career as a solicitor before entering parliament in 1991. In parliament she held the position of Minister for Consumer Affairs. In Government, she held the further portfolios of Assistant Minister of Education, Minister for Industrial Relations, Minister for the Status of Women and Shadow Minister for the Arts, Ethnic Affairs and Women. After four years as Deputy Leader of the NSW Parliamentary Liberal Party, Ms Chikarovski was elected Leader 1998. Since retiring from politics in 2003 Ms Chikarovski has successfully established a career in government relations, as a corporate advisor, event speaker, leadership mentor and media commentator. She is an ambassador for the Eggtober Foundation, YWCA NSW and Australian Indigenous Education Foundation and the Chair of NSW Women's Rugby. Directorships include NSW Rugby Union, Waratahs Rugby Union and Humpty Dumpty Foundation.



Albert Terence Birss

CEO/Managing Director
(Chair 2004 – 2011)

Qualifications

CA(NZ), FCIS, FCSA, FIPA

Experience

Mr Birss was appointed CEO/MD on 1st July 2013 having held the position of Executive Chairman in the prior year. Over a period of approximately 10 years from 2001 to 2011, Mr Birss was Chairman of RSE's predecessor and Chairman of RSE since incorporation in 2004. He is a director of the trustee of the Road Safety Education Foundation, a director Road Safety Education Limited in New Zealand and is a Rotarian and dual Paul Harris Fellow. Before his appointment as CEO/MD, Mr Birss, a member of Chartered Accountants Australia and New Zealand was an accountant in public



John Loughlin

Experience



practice specialising in the provision of business and financial advice. Mr Birss' experience includes corporate reconstruction and recovery and the establishment of new businesses. His background includes corporate acquisition and consultancy and extensive experience in the finance industry during where he held senior positions in corporate lending, strategy development and risk assessment.

Mr Loughlin is the Managing Director of a building contracting company specialising in the construction of sport and leisure facilities for community groups including schools. He has wide experience in business including quality assurance, environment and safety policy, marketing and costing and project management. Mr. Loughlin was instrumental with others in establishing the RSE Program, contributing to policy formulation and implementation in such areas as program content, research, risk assessment, quality assurance and sponsorship and liaison with government and government authorities.

Paul Albert Pixton

Qualifications

Experience



Dip FP, JP

Mr. Pixton was managing director of a financial planning practice which has been in business for over 20 years in the Hills District of Sydney. He specialised in advice in the superannuation and retirement fields for both corporate and individual clients. Following the sale of this business he is now managing director of a general insurance company. Paul is also involved in charitable works and is a local business leader. He has long involvement with road safety and was one of the founders of the RYDA

program. Mr. Pixton is a Rotarian and a Past President of the Rotary Club of Dural.

Dr Ronald (Keith) Barton

Qualifications

BSc(Hons 1), PhD, FTSE

Experience

Dr Keith Barton graduated with degrees in Chemical Engineering from the University of New South Wales. He retired from full time employment in 1999 after a career in manufacturing in Australia and the USA working for companies such as BHP, CSR (Executive Director) and James Hardie Industries (CEO and Managing Director). He has had extensive board experience with a number of public companies as a non executive director of Colonial Ltd, F H Faulding, Goodman Fielder (Chairman), Citect Ltd, Keycorp Ltd, Tower Ltd (Chairman), Coles Group, Amcor Ltd and Air Liquide (Australasia) Ltd.



Edward (Ned) Boyce

Qualifications

BA LLB (ANU) FAICD

Experience

Mr Boyce is a Senior Consultant at Hunt & Hunt practising since 1974 in property and commercial law from the Sydney office of the firm. He is a past National Managing partner and chairman of the firm. Mr Boyce is a member of and past president of the Rotary Club of Sydney, a past chairman of the Foundation of a major independent school in Sydney and a past councillor of the Law Society of New South Wales. Mr Boyce is a graduate of an executive education program of the Harvard Business School and is a Director of the trustee of Road Safety Education Foundation.



Lynne Wilkinson

Qualifications

BA Hons Grad Dip Fin Mgt.

Experience

As a director of Niche Business Solutions Ms Wilkinson works with industry groups in strategic communications. During 2008-2014 she was the CEO of The Australian Companies Institute Limited (AUSBUY) representing businesses across many industry sectors which requires active media, lobbying and community engagement. Her business career has provided



opportunities to apply communication skills in senior marketing roles with Myer Property in shopping centres, nationally with Coles and Myer. She has also consulted in agriculture/food, education and property development. Throughout her career Lynne has been a change agent in organisations working with and through people. As an Infants Teacher for a decade, her skills were acknowledged as a specialist Reading and Communication Adviser in the North Sydney Region. Lynne experienced first hand Rotary's influence on youth as a member of one of the first Rotaract Clubs in Australia, and the opportunity to spend time in the USA under Rotary's auspices.

Dr Stuart Boland

Qualifications

AM, MB, BS, FRCS, FRACS, FACS, FAMA, FAICD

Experience

A/Prof Boland graduated in Medicine at Sydney University in 1967 and was appointed an Honorary General Surgeon at Sydney Hospital and Mona Vale Hospital in 1975. He served the Medical Profession in a number of roles including as Chairman of the Medical Board at Mona Vale Hospital, subsequently on the Council of the Association of Surgeons and the Australian Council of Health Care Standards, two years as President of the NSW Branch of the AMA in 1991-1992 and later was the medical representative on the Council of Professions in NSW. He had 10 years as Chairman of Australia's biggest Medical Indemnity Insurer (AVANT) until he retired in 2014. Since 2011 he has taught anatomy at Notre Dame University. Dr Boland is a director and Chairman of the trustee of Road Safety Education Foundation.



> REPORT OF THE DIRECTORS (continued)

Road Safety Education Limited & Controlled Entity 30 June 2018

Information on the Executive Officers

Albert Terence Birss	CA(NZ), FCIS, FCSA, FIPA CEO/Managing Director
Greg Rappo	B.Sc.Agr. (Hons), FAICD Program Director Mr Rappo joined the company in 2008 and was appointed Director of Programs in April 2015. He has a background in sales and marketing that has included a range of senior management positions with multi national corporations including Chevron, Abbott Laboratories and Sumitomo. Greg is an active member of the State Emergency Service (SES) and Past President of the Rotary Club of St Ives.
Brooke O'Donnell	General Manager - Education & Communications Joining the company in 2006 Ms O'Donnell has gained a wide experience in all facets of the company's activities including in her role as National Operations Manager. She was appointed General Manager - Education & Communications in February 2016. Brooke has a background in administration that has included a range of senior positions with multinational corporations including Mayne Nichless Limited and not for profit, Institute for Magnetic Resonance Research.

Meetings of directors

During the financial year, seven meetings of directors (including committees of directors) were held. Attendances by each director during the year were as follows:

	Number of Directors eligible to attend	Meetings attended
Albert Terence Birss	7	7
John Loughlin	7	6
Paul Albert Pixton	7	4
Dr Ronald (Keith) Barton	7	4
Edward (Ned) Boyce	7	7
Kerry Anne Chikarovski	7	6
Lynne Wilkinson	7	5
Dr Stuart Boland	7	7

Operating Results

The consolidated profit of the Group amounted to \$ 63,647 (2017: \$ (51,473)).

Dividends paid or recommended

RSE's constitution prohibits the payment of dividends to equity holders. No dividends were paid or declared since the start of the financial year. No recommendation for payment of dividends has been made.

Indemnification and insurance of officers and auditors

No indemnities have been given or insurance premiums paid, during or since the end of the financial year, for any person who is or has been an officer or auditor of Road Safety Education Limited and Controlled Entities with the exception of the payment of a premium for directors and officers liability insurance of \$3,143 (2017: \$2,972).

Proceedings on behalf of company

No person has applied for leave of court to bring proceedings on behalf of the Company or intervene in any proceedings to which the Company is a party for the purpose of taking responsibility on behalf of the Company for all or any part of those proceedings.

The company was not a party to any such proceedings during the year.

Auditor's independence declaration

The lead auditor's independence declaration in accordance with section 60-40 of the Australian Charities and Not for Profits Commission Act 2012 for the year ended 30 June 2018 has been received and can be found on page 7 of the financial report.

Signed in accordance with a resolution of the Board of Directors and signed for and on behalf of the Directors by E Boyce, Meeting Chair and A T Birss, CEO/Managing Director 25 October 2018.

The referenced page in the preceding paragraph as page 7 appears on page 18 of this report.

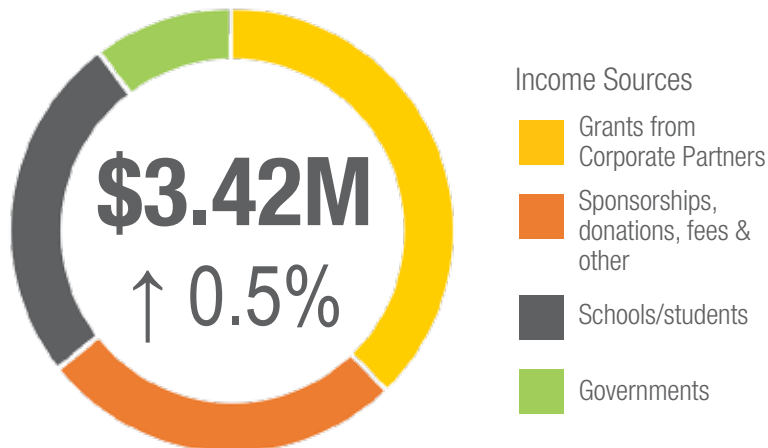
> FINANCIAL RESULTS AT A GLANCE

Income & Expenditure Analysis (consolidated results - Australia & New Zealand)

The annual financial report which includes the audited financial statements of the Company and its subsidiaries is distributed to members for adoption at the annual general meeting. Set out below is abbreviated financial information including excerpts from the audited financial statements.

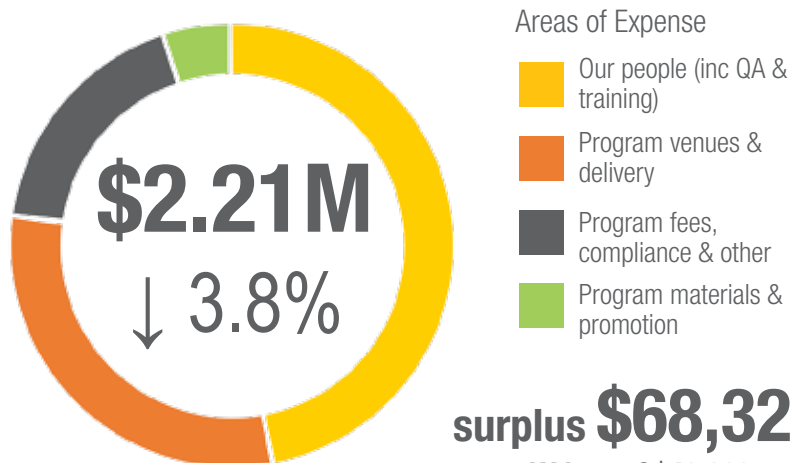
Income

(Income sources after deducting subsidies, \$1.15M from income \$3.42M)



Expenditure

(Areas of expenditure)



surplus **\$68,320**
LY loss of \$49,033

Members Group Equity \$182,030 ↑ 60%

> FINANCIAL REPORT

Road Safety Education Limited (Australia) Independent Audit Report

An independent audit of the 2017/2018 Financial Report for Road Safety Education Limited has been conducted by Geoffrey Adcock (Partner), Storey Blackwood, Chartered Accountants, Level 10, 32 Martin Place, Sydney, NSW 2000.

Road Safety Education Limited and Controlled Entities

ABN 17 118 867 796

Auditor's Independence Declaration To the Directors of Road Safety Education Limited and Controlled Entities

In accordance to the requirements of section 60-40 of the Australian Charities and Not-for-profits Commission Act 2012, as lead auditor for the audit of Road Safety Education Limited and Controlled Entities for the year ended 30 June 2018, I declare that, to the best of my knowledge and belief, during the year ended 30 June 2018, there have been no contraventions of:

- (i) the auditor independence requirements as set out in the Australian Charities and Not-for-profits Commission Act 2012 in relation to the audit; and
- (ii) any applicable code of professional conduct in relation to the audit.



Storey Blackwood
Level 10, 32 Martin Place
Sydney NSW 2000


Geoffrey N Adcock - Partner

Dated this 26th day of October 2018

Report of the independent auditor on the summary consolidated financial statements to the members of Road Safety Education Limited

The accompanying summary consolidated financial statements, which comprise the summary consolidated statement of financial position as at 30 June 2018, and the summary consolidated statement of comprehensive income are derived from the audited financial report of Road Safety Education Limited for the year ended 30 June 2018. We expressed an unmodified audit opinion on that financial report in our report dated 25 October 2018.

That financial report, and the summary consolidated financial statements, does not reflect the effects of events that occurred subsequent to 25 October 2018, the date of our report.

The summary consolidated financial statements do not contain all the disclosures required by the Australian Accounting Standards – Reduced Disclosure Requirements. Reading the summary consolidated financial statements, therefore, is not a substitute for reading the audited financial report of Road Safety Education Limited.

Opinion

In our opinion, the summary consolidated financial statements derived from the audited financial report of Road Safety Education Limited for the year ended 30 June 2018 are consistent, in all material respects, with that audited financial report.

Directors' responsibility for the summary financial statements

The directors are responsible for the preparation of the summary of the audited financial report.

Auditor's responsibility

Our responsibility is to express an opinion on the summary consolidated financial statements derived from the audited financial report of Road Safety Education Limited based on our procedures, which were conducted in accordance with Auditing Standard ASA 810 Engagements to Report on Summary Financial Statements.


Storey Blackwood


Geoffrey N Adcock
Level 10, 32 Martin Place
Sydney NSW 2000

Dated this 31 October 2018

> FINANCIAL REPORT

Road Safety Education Limited & Controlled Entity (as at June 2018)

Statement Profit and Loss and Other Comprehensive Income

	Consolidated		Parent	
	2018	2017	2018	2017
	\$	\$	\$	\$
Sponsorships & grants for Program maintenance, QA & subsidies	854,607	870,556	790,308	848,891
Program school fees & grants for program delivery	2,570,380	2,537,805	1,919,249	1,929,951
TOTAL REVENUE	3,424,987	3,408,361	2,709,557	2,778,842
Less: Program discounts given	(1,149,191)	(1,166,082)	(987,872)	(1,038,251)
NET REVENUE	2,275,796	2,242,279	1,721,685	1,740,591
Employee benefits expense	(961,198)	(869,193)	(858,094)	(750,595)
Depreciation and impairment expense	37,429	(67,061)	43,001	(63,631)
Other expenses	(1,288,380)	(1,357,498)	(847,386)	(984,739)
PROFIT/(LOSS) BEFORE INCOME TAX	63,647	(51,473)	59,206	(58,374)
Income tax expense	-	-	-	-
PROFIT/(LOSS) FOR THE YEAR	63,647	(51,473)	59,206	(58,374)
OTHER COMPREHENSIVE INCOME				
Exchange differences on translating foreign controlled entities	4,673	2,400	-	-
TOTAL OTHER COMPREHENSIVE INCOME FOR THE YEAR	4,673	2,400	-	-
TOTAL COMPREHENSIVE INCOME FOR THE YEAR	(68,320)	(49,033)	(59,206)	(58,374)

Statement of Financial Position

ASSETS

CURRENT ASSETS

Cash and cash equivalents	507,125	356,082	426,419	325,070
Trade and other receivables	78,439	56,883	58,485	38,056
TOTAL CURRENT ASSETS	585,564	412,965	484,904	363,126

NON-CURRENT ASSETS

Financial assets	800	800	801	801
Plant and equipment	20,232	22,455	11,759	11,429
Intangible assets	314,349	238,136	314,349	238,136
TOTAL NON-CURRENT ASSETS	335,381	261,391	326,909	250,366
TOTAL ASSETS	920,945	674,356	811,813	613,492

LIABILITIES

CURRENT LIABILITIES

Trade and other payables	256,311	249,589	206,842	213,089
Employee benefits	73,458	69,322	69,446	64,629
Other liabilities	350,560	195,465	299,544	171,315
TOTAL CURRENT LIABILITIES	680,329	514,376	575,832	449,033

NON-CURRENT LIABILITIES

Employee benefits	58,596	46,280	58,596	46,280
TOTAL NON-CURRENT LIABILITIES	58,596	46,280	58,596	46,280
TOTAL LIABILITIES	738,925	560,656	634,428	495,313

NET ASSETS

NET ASSETS	182,020	113,700	177,385	118,179
-------------------	----------------	---------	----------------	---------

EQUITY

Reserves	18,203	13,530	-	-
Retained surplus	163,817	100,170	177,385	118,179
TOTAL EQUITY	182,020	113,700	177,385	118,179

Excerpts from the audited financial report.

> COMPANY DIRECTORY & DIRECTOR'S REPORT

Road Safety Education Limited (New Zealand)

The Company

Road Safety Education Limited (described as RSE NZ in this section), was incorporated in 2006 under the Company's Act 1993 (NZ) and is a registered charity under the Charitable Act 2005. RSE NZ is a not for profit company delivering road safety education programs specifically designed for youth in the community. The evidence-based RSE RYDA Program is presented by professionals in a community environment supported by partnerships with Rotary Clubs, as well as government agencies and corporate New Zealand.

Operational Results

The profit from ordinary activities \$10,307 (NZ currency) (last year (\$10,634) was transferred to reserves).

Company number

1883589

Registered Office

McGregor Bailey
2 Crummer Road
Ponsonby/ Auckland

Registered Charitable Entity Number

CC27875

Shareholder

Road Safety Education Limited (Australia)

Programme Manager - NZ

Maria Lovelock, BA, Cert. DM

Auditor

McGregor Bailey

Banker

ASB Bank Limited

Website

www.rse.org.nz

Directors

The names of the directors in office at any time during, or since the end of, the year are:

A T (Terry) Birss CA(NZ), FCIS, FCSA, FIPA – Chairman
Mr Birss is a member of Chartered Accountants Australia and New Zealand and has been a Director since incorporation in 2006.

Alistair Coleman
Experience



Director since 2011
Educated at Otago University, training in finance and marketing, Mr Coleman has significant international experience in manufacturing, marketing, and service businesses and is a business consultant focusing on commercialisation of new products and technologies, strategy, and governance. He is a company director and advises companies as they adapt to a new business environment since the Christchurch earthquakes. Mr Coleman is a Rotarian, and previously held CEO and GM positions in a number of significant New Zealand companies.

Ru Tauri
Qualifications
Experience



Director since November 2015
MBA, BIS
Mr Tauri is Community Engagement Lead with Statistics NZ, which includes stakeholder engagement, team management and strategy development. Prior to his position of Business Development and Initiatives Manager, ANZ, Ru held the role of General Manager, RSE NZ. He has an event management and account management background with a special interest in collaboration, grassroots development and stakeholder engagement.

> FINANCIAL REPORT

Road Safety Education Limited (New Zealand) (year ended 30 June 2018)

Statement of Financial Performance

NZ Currency	2018	2017
	\$	\$
REVENUE		
Programme School fees & Grants for Program Delivery	521,963	441,651
Sponsorship & Grants for Programmes	321,202	281,742
Interest Received	23	26
TOTAL REVENUE	843,188	723,419
Programme Discounts Given	(296,851)	(254,857)
NET REVENUE	546,337	468,562
LESS EXPENSES		
Depreciation	(6,246)	(3,729)
Programme Delivery Expenses	(232,950)	(189,259)
Programme Maintenance, QA & other	(296,834)	(264,940)
SURPLUS/DEFICIT BEFORE BENEFICIARY DISTRIBUTIONS	10,307	10,634
NET SURPLUS/(DEFICIT)	10,307	10,634

Statement of Financial Performance

CURRENT ASSETS		
Cash and cash equivalents	90,721	33,710
Trade and other receivables	21,370	20,779
TOTAL CURRENT ASSETS	112,091	54,489
NON CURRENT ASSETS		
Property, plant & equipment	9,525	11,984
TOTAL NON CURRENT ASSETS	9,525	11,984
TOTAL ASSETS	121,616	66,473
CURRENT LIABILITIES		
Shareholder's current account	3,905	525
Trade and other payables	96,866	54,819
Employee benefits	4,510	5,101
TOTAL CURRENT LIABILITIES	105,281	60,445
NON-CURRENT LIABILITIES		
Term liabilities	-	-
TOTAL NON-CURRENT LIABILITIES	-	-
TOTAL LIABILITIES	105,281	60,445
NET (LIABILITIES)/ASSETS	16,335	6,028
Represented by		
EQUITY		
Share capital	-	-
Retained earnings	16,335	6,028
TOTAL EQUITY	16,335	6,028

An independent audit of the 2017/2018 Financial Report for Road Safety Education Limited has been conducted by McGregor Bailey, Chartered Accountants, 2 Crummer Rd, Grey Lynn 1021, New Zealand.

McGregor Bailey
CHARTERED ACCOUNTANTS
MEMBER OF THE BIG 4 ACCOUNTING FIRMS

Independent Auditor's Report

To the readers of

Road Safety Education Limited Summary Financial Statements

The accompanying summary financial statements, which comprise the statement of financial position as at 30 June 2018, and the statement of financial performance are consistent, in all material respects, with the audited performance report of Road Safety Education Limited prepared in accordance with the Public Benefit Entity Simple Format Reporting Account (not for profit) for the year ended 30 June 2018. We expressed an unmodified audit opinion on that performance report in our report dated 25 October 2018.

That performance report, and the summary financial statements, do not reflect the effects of events that occurred subsequent to 25 October 2018, the date of our report.

The summary financial statements do not contain all the disclosures required under generally accepted accounting practice in New Zealand. Reading the summary financial statements, therefore, is not a substitute for reading the audited financial report of Road Safety Education Limited.

Directors' responsibility for the summary financial statements

The Directors are responsible for the preparation of a summary of the audited financial report, which was prepared in accordance with the Public Benefit Entity Simple Format Reporting Account (not for Profit) Standard.

Auditor's responsibility

Our responsibility is to express an opinion on the summary financial statements derived from the audited financial report of Road Safety Education Limited based on our procedures, which were conducted in accordance with International Auditing Standard (New Zealand) 810 Engagements to Report on Summary Financial Statements.

Our firm assisted in the formatting of the statutory financial statements for the company. We the auditors have no other relationship with, or interests in, Road Safety Education Limited.

Opinion

In our opinion, the summary financial statements derived from the audited financial report of Road Safety Education Limited for the year ended 30 June 2018 are consistent, in all material respects, with that audited financial report.

McGregor Bailey

McGregor Bailey
Parsenby, Auckland
25 October 2018



> DIRECTORY & TRUSTEE'S REPORT

Road Safety Education Foundation

The Foundation

Road Safety Education Foundation is an endowment trust formed in 2009 to help sustain the aim of Road Safety Education Limited. Road Safety Education Foundation is a registered authority holder under the Charitable Fundraising Act 1991.

Operational Results & Distribution to Beneficiary

The Foundation recorded a loss of \$226 (LY loss \$508) which was transferred from reserves.

Trust Corpus

The corpus of the Trust Fund including retained earnings, as at 30 June 2017, amounting to \$71,180 (last year \$71,308).

Principal Office

Level 2, 10 Julius Avenue
North Ryde NSW 2113

Trustee

Road Safety Education Foundation Pty Limited is incorporated under the Corporations Act 2001.

Directors (at the date of this financial report)

Stuart Leigh Boland AM
AT (Terry) Birss
Edward (Ned) Boyce

Experience of the directors is set out under the Directors' Report of Road Safety Education Limited forming part of this Concise Annual Report.

Banker

Macquarie Limited

Auditor

Storey Blackwood
Level 10, 32 Martin Place
Sydney NSW 2000

Website

www.rse.org.au

Patron

The Honourable Sir William Deane

Qualifications

AC KBE

Experience

Sir William Deane was called to the Bar in 1957 and appointed Queen's Counsel in 1966. In 1977 Sir William was appointed a judge in the Equity Division of the Supreme Court of New South Wales and judge of the Federal Court of Australia and the President of the Australian Trade Practices Tribunal. In July 1982, he was appointed a Justice of the High Court of Australia and served on that court until 10 November 1995. Sir William was sworn in as Australia's 22nd Governor-General on 16 February 1996 and served until 2001. He was appointed a Knight of the British Empire in 1982 and a Companion in the Order of Australia in 1988. Sir William was a Rotary Ambassadorial Scholar and is an Honorary member of the Rotary Club of Sydney.



Vice Patrons

- Gillian Moore AO BA MA DipEd, Principal of the Pymble Ladies' College from 1989 until 2007.
- Kenneth Moroney AO, APM, MBA, Commissioner of the NSW Police Force from 2002 until 2007.
- A/Prof Dr Brian Owler MB BS BSc(Med)(Hons) PhD FRACS, an adult and paediatric neurosurgeon based at Westmead Hospital.
- The Hon James Wood AO, QC, Judge of the NSW Supreme Court including Chief Judge at Common Law from 1984 until 2005 and currently Chairman of the NSW Law Reform Commission.
- Geoffrey McIntyre AM. PSM (S'pore), former non-executive Chair of: Bank of China Australia Ltd, Road Safety Education Limited and Road Safety Education Foundation Ltd.
- Dr Ronald (Keith) Barton BSc (Hons 1), PhD, FTSE retired after a career in manufacturing in Australia and the USA with companies such as BHP, CSR & James Hardie Industries. (Appointed 28/6/18)

> FINANCIAL REPORT

Road Safety Education Foundation (Year Ended 30 June 2018)

Income Statement

	2018	2017
	\$	\$
INCOME		
Donations	200	-
Interest Received	3	2
Dividends	857	852
LESS EXPENDITURE		
Audit & accounting	700	700
Investment costs	-	1
Loss on sale of shares	-	1
Other expenses	586	663
Total	1,286	1,363
(LOSS)/PROFIT BEFORE INCOME TAX	(226)	(508)
Income tax expense	-	-
(LOSS)/PROFIT AFTER INCOME TAX	(226)	(508)
Distribution to beneficiaries		
Road Safety Education Ltd	-	-
Total Distribution	-	-

	2018	2017
ASSETS		
CURRENT ASSETS		
Cash and cash equivalents	215	345
Trade and other receivables	48,097	49,051
TOTAL CURRENT ASSETS	48,312	49,396
NON CURRENT ASSETS		
Investments	22,368	21,510
Formation costs	1,100	1,100
TOTAL NON CURRENT ASSETS	23,468	22,610
TOTAL ASSETS	71,780	72,006
LIABILITIES		
CURRENT LIABILITIES		
Trade and other payables	700	700
TOTAL CURRENT LIABILITIES	700	700
TOTAL LIABILITIES	700	700
NET ASSETS	71,080	71,306
EQUITY		
Settlement sum	100	100
Retained earnings	70,980	71,206
TOTAL EQUITY	71,180	71,306

Excerpts from the audited financial report.

An independent audit of the 2017/2018 Financial Report for Road Safety Education Foundation has been conducted by Geoffrey Adcock (Partner), Storey Blackwood, Chartered Accountants, Level 10, 32 Martin Place, Sydney, NSW 2000.

ROAD SAFETY EDUCATION FOUNDATION
ABN 35 854 475 149

INDEPENDENT AUDITOR'S REPORT TO THE TRUSTEE OF ROAD SAFETY EDUCATION FOUNDATION

Report on the Audit of the Financial Report

Opinion

We have audited the accompanying financial report of ROAD SAFETY EDUCATION FOUNDATION, which comprises the balance sheet as at 30 June 2018 and the income statement for the year ended on that date, a summary of significant accounting policies and other explanatory notes and the trustee's declaration.

In our opinion, the accompanying financial report presents fairly, in all material respects, including:

- (i) giving a true and fair view of the Company's financial position as at 30 June 2018 and of its financial performance for the year ended, and
- (ii) complying with Division 60 of the Australian Charities and Not-for-profits Commission Regulation 2013.

Basis for Opinion

We conducted our audit in accordance with Australian Auditing Standards. Our responsibilities under those standards are further described in the Auditor's Responsibilities for the Audit Report section of our report. We are independent of the Company in accordance with the auditor independence requirement of Division 80 of the Australian Charities and Not-for-profits Commission Act 2012 and the ethical requirements of the Accounting Professional and Ethical Standards Board's APES110 Code of Ethics for Professional Accountants (the Code) that are relevant to our audit of the financial report in Australia. We have also fulfilled our ethical responsibilities in accordance with the Code.

We believe that the audit evidence we have obtained is sufficient and appropriate to provide a basis for our audit opinion.

Emphasis of Matter - Basis of Accounting

We draw attention to Note 1 to the financial report, which describes the basis of accounting. The financial report has been prepared to assist the Company to meet the requirements of Division 60 of the Australian Charities and Not-for-profits Commission Act 2012. As a result, the financial report may not be suitable for another purpose. Our opinion is not modified in respect to this matter.

Responsibilities of Management and Those Charged with Governance

Management is responsible for the preparation and fair presentation of the financial report in accordance with Australian Accounting Standards and Division 60 of the Australian Charities and Not-for-profits Commission Act 2012 and for such internal control as management determines is necessary to enable the preparation of the financial report that gives a true and fair view and is free from material misstatement, whether due to fraud or error.

In preparing the financial report, the management is responsible for assessing the Company's ability to continue as a going concern, disclosing, as applicable, matters related to going concern and using the going concern basis of accounting unless the management either intend to liquidate the Group or to cease operations, or have no realistic alternative but to do so.

Those charged with governance are responsible for overseeing the Company's financial reporting process.

Auditor's Responsibilities for the Audit of the Financial Report

Our objectives are to obtain reasonable assurance about whether the financial report as a whole is free from material misstatement, whether due to fraud or error, and to issue an auditor's report that includes our opinion. Reasonable assurance is a high level of assurance, but is not a guarantee that an audit conducted in accordance with Australian Auditing Standards will always detect a material misstatement when it exists. Misstatements can arise from fraud or error and are considered material if, individually or in the aggregate, they could reasonably be expected to influence the economic decisions of users taken on the basis of the financial report.

As part of an audit in accordance with the Australian Auditing Standards, we exercise professional judgement and maintain professional scepticism throughout the audit. We also:

- Identify and assess the risks of material misstatement of the financial report, whether due to fraud or error, design and perform audit procedures responsive to those risks, and obtain audit evidence that is sufficient and appropriate to provide a basis for our opinion. The risk of not detecting a material misstatement resulting from fraud is higher than for one resulting from error, as fraud may involve collusion, forgery, intentional omissions, misrepresentations, or the override of internal control.
- Obtain an understanding of internal control relevant to the audit in order to design audit procedures that are appropriate in the circumstances, but not for the purpose of expressing an opinion on the effectiveness of the Group's internal control.
- Evaluate the appropriateness of accounting policies used and the reasonableness of accounting estimates and related disclosures made by the directors.
- Conclude on the appropriateness of the directors' use of the going concern basis of accounting and, based on the audit evidence obtained, whether a material uncertainty exists related to events or conditions that may cast significant doubt on the Group's ability to continue as a going concern. If we conclude that a material uncertainty exists, we are required to draw attention in our auditor's report to the related disclosures in the financial report or, if such disclosures are inadequate, to modify our opinion. Our conclusions are based on the audit evidence obtained up to the date of our auditor's report. However, future events or conditions may cause the Group to cease to continue as a going concern.
- Evaluate the overall presentation, structure and content of the financial report, including the disclosures, and whether the financial report represents the underlying transactions and events in a manner that achieves fair presentation.

Auditor's Responsibilities for the Audit of the Financial Report

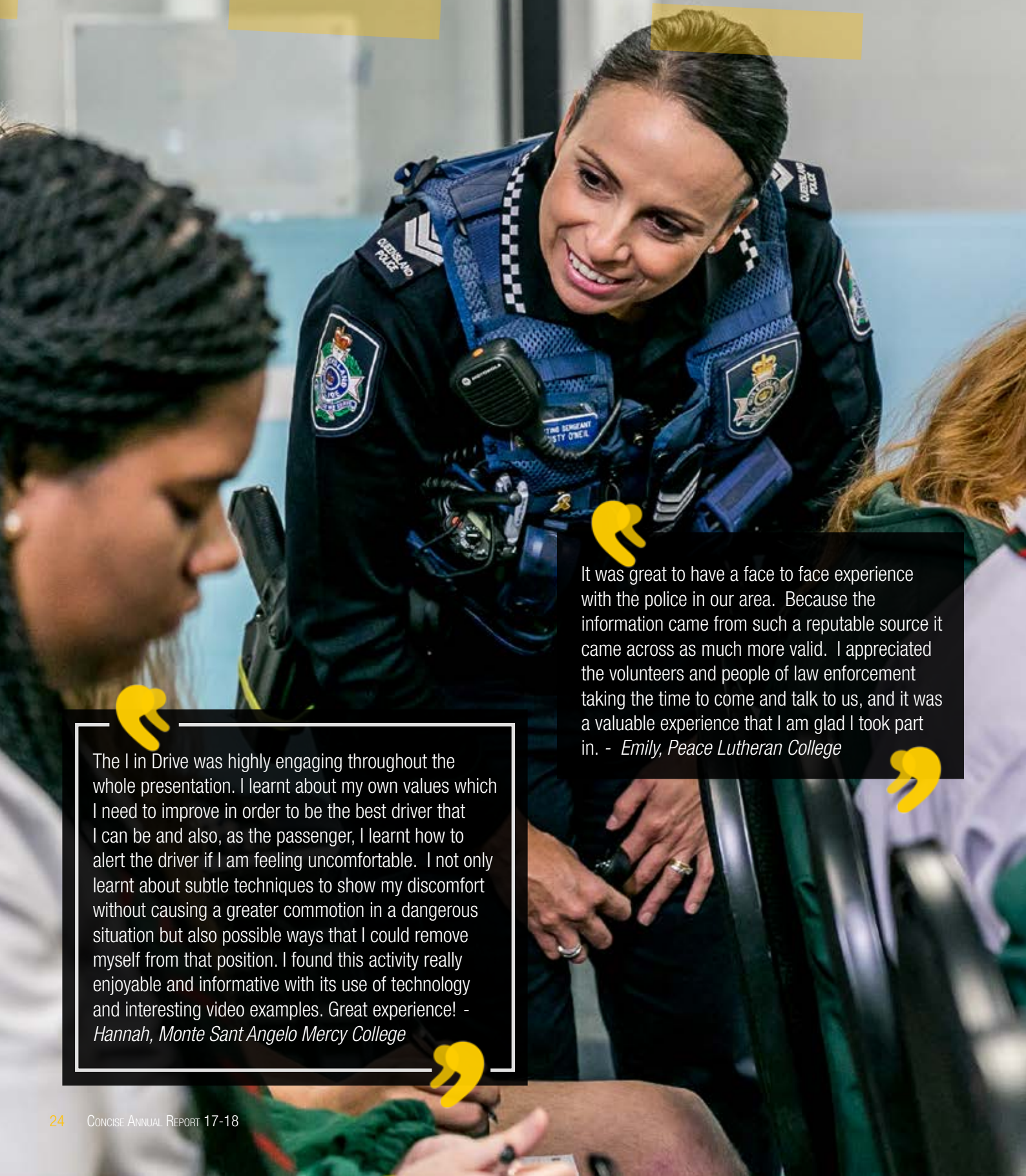
We communicate with the directors regarding, among other matters, the planned scope and timing of the audit and significant audit findings, including any significant deficiencies in internal control that we identify during our audit.

We also provide the directors with a statement that we have complied with relevant ethical requirements regarding independence, and to communicate with them all relationships and other matters that may reasonably be thought to bear on our independence, and where applicable, related safeguards.

Storey Blackwood
Storey Blackwood
Level 10, 32 Martin Place
Sydney NSW 2000

Geoffrey Adcock
Partner - Geoffrey Adcock
Date: 25 October 2018

OUR COMMUNITY



The I in Drive was highly engaging throughout the whole presentation. I learnt about my own values which I need to improve in order to be the best driver that I can be and also, as the passenger, I learnt how to alert the driver if I am feeling uncomfortable. I not only learnt about subtle techniques to show my discomfort without causing a greater commotion in a dangerous situation but also possible ways that I could remove myself from that position. I found this activity really enjoyable and informative with its use of technology and interesting video examples. Great experience! - Hannah, Monte Sant Angelo Mercy College

It was great to have a face to face experience with the police in our area. Because the information came from such a reputable source it came across as much more valid. I appreciated the volunteers and people of law enforcement taking the time to come and talk to us, and it was a valuable experience that I am glad I took part in. - Emily, Peace Lutheran College



> MEET OUR TEAM

Australia

Terry Birss, CEO/Managing Director

Previously Executive Chairman, Mr Birss was appointed CEO/Managing Director in 2011 to manage the affairs of the group. His duties include implementation and management of policy and strategic plans especially in relation to program veracity, financial and risk management and stakeholder relationships.

Greg Rappo, Program Director

Commencing in January 2008, Greg's key responsibility is to expand the RYDA Program on a National basis. Greg works closely with Rotary Clubs and other stakeholders to establish and support RYDA venues and provides general marketing support to promote continued growth of RSE's Programs.

Brooke O'Donnell, GM Education & Communications

Brooke joined RSE in January 2006 and is responsible for the quality and effectiveness of all RSE program content including research, development, training and evaluation. Brooke also oversees media and communications and production of program and promotional materials.

Irene Peñagaricano, Program Administrator

Irene joined the Company in September 2018 and has responsibility for supporting all RYDA venues, coordinating facilitator training and providing administrative support.

Christina Angonno, Accountant/Office Manager

Commencing in April 2016, Christina provides financial administration of all business units. She is also responsible for administrative management of the Australian head office.

New Zealand

Maria Lovelock, Programme Manager - NZ

Maria was appointed in March 2016 as the senior NZ representative overseeing the operations of the New Zealand organisation – working with stakeholders and Rotary clubs, supporting the operation of all programmes including training, recruitment, quality control, PR and financial supervision.

Jane Ward, Media & Communications Coordinator (p/t)

Commencing in March 2010, Jane's responsibility is to administer internal and external communications, through media opportunities and evaluation reporting.

RYDA Program Coordinators

Our Program Coordinators have the responsibility of ensuring our metropolitan venues run efficiently and effectively. Their role includes booking schools and facilitators as well as attending program days for quality assurance.

Australia

Colin Hyde, Sydney

Colin joined RSE in June 2018, taking on the responsibility for four of RYDA's largest metropolitan venues. He also provides assistance to the Central Coast and Illawarra venues.

Catherine Smith, Melbourne (p/t)

Commencing in January 2012, Catherine is responsible for the three Melbourne metropolitan venues and all regional Victorian venues.

Hannah Olsen, Brisbane

Hannah joined RSE in June 2014, taking on the responsibility for the four Brisbane metropolitan venues and also provides assistance to regional Qld programs.

New Zealand

Pearl Newman, Northland & Lower North Island (p/t)

Pearl has been with RSE since 2012 and is responsible for running programmes across our North Island regional venues. She also facilitates at other venues as needed.

Naomh Cusin, South Island (p/t)

Naomh joined the RSE team in October 2018 and is responsible for running all programmes in the South Island.

> OUR INTERNATIONAL ADVISORY COUNCIL

RSE is guided by its Advisory Council in providing the best possible education programs for young people. The involvement of the Council is an important link between RSE and the international research community ensuring all RSE programs are strongly underpinned by best-evidence road safety education.

During 2018, Council members critiqued the current RYDA program and advised on a range of matters including current research indicating where the program could be revised and where research supported specific learning elements. We also worked individually with Council members on issues appropriate to their specialities.

We are indebted to the contributions from members for their valued counsel and advice in relation to our programs, their development, quality assurance and evaluation processes.



> MEET THE MEMBERS

Professor Barry Watson, PhD is an Adjunct Professor in the Faculty of Health at the Centre for Accident Research and Road Safety, QLD (CARRS-Q). He has over 25 years experience in road safety research and policy development. As a founding member and former head of CARRS-Q, Barry has been involved in the development and delivery of courses in road safety and traffic psychology for undergraduate and postgraduate students. Barry has lead research teams examining a range of road user behaviour issues including drink driving, speeding, driver licensing, driver education and traffic law enforcement.

Associate Professor Teresa Senserrick, PhD is a member of the Transport and Road Safety (TARS) Research Group, University of New South Wales. Teresa was trained in Developmental Psychology and has two decades of experience in health and safety research. Since focusing on road safety in 1999, she has become internationally renowned for her expertise in young and novice driver research, particularly regarding driver training, education and graduated licensing. She has over 200 publications, reports and presentations, and has been called upon to provide policy advice to several jurisdictions in Australia, the United States and Sweden. (resigned May 2018)

Dr Neale Kinnear, PhD, BSc (Hons), CAD is a principal psychologist in the study of human behaviour and transport at TRL, the UK's Transport Research Laboratory. Neale has led or contributed to numerous studies evaluating driver training and education, advanced methods for driver instruction, and studies to understand the needs of novice drivers. In 2013 Neale was the lead author of an international evidence review of best practice for novice driver safety for the UK Government. Neale's work has been widely published and he has presented at various international conferences. Neale has also served as a collision investigator attending crash scenes and providing psychological input to crash reconstruction.

Dr Marilyn Johnson, PhD is a Senior Research Fellow in the Institute of Transport Studies at Monash University. Her research focuses on cyclist safety including electric bikes, motorised mobility scooters and the elderly, driver training and, cyclist fatality crash factors. She is also the Research Manager at the Amy Gillett Foundation (AGF), where she ensures activities and programs are based on critically evaluated scientific evidence. Marilyn was a significant contributor to action that has led to the amendment of minimum passing distance legislation in several Australian jurisdictions. She has over 10 years experience in road safety research and policy development and has provided expert advice on road safety policy in Australia.

Mary Chamberlain MNZM, EMPA, B Ed is a director of Evaluation Associates and a consultant. As a thought leader in curriculum and assessment, Mary is one of New Zealand's most highly respected educators. Mary spent 10 years as a group and senior manager in the Ministry of Education in Wellington. She led the development of the New Zealand Curriculum, the development of Curriculum Exemplars for years 1-10, and the design of the National Assessment Strategy. She has recently been part of the OECD team who reviewed the education system in Indonesia. Mary has deep knowledge of the education system and a profound understanding of teaching, learning and assessment and effective education system design.

> OUR AMBASSADORS

RSE is fortunate to have the support of two wonderful Ambassadors who share their time and talent to help raise awareness of road safety issues and the need for youth road safety education. As Ambassadors of RYDA, they play a vital role, in promoting the value of youth education, engaging with our students and key stakeholders and reaching out to their own extensive networks to promote our vision of zero youth road trauma.

Both of our Ambassadors have been touched by road trauma and both serve as an important reminder that behind the road toll are

*the mums, dads, brothers, sisters, extended families and loving friends left behind
the first responders and a broad community of people impacted
and of course, the dreams never to be realised from a life cut short*



Peter Frazer

Peter Frazer is a leading advocate for road safety and a driving force behind National Yellow Ribbon Road Safety Week in Australia.

Peter's road safety journey began with the tragic loss of his daughter in 2012. On her way to Wagga Wagga to start a degree in photography at Charles Sturt University, Sarah's car broke down. Because the shoulder of that section of the freeway was so narrow she could not get her car completely out of the left-hand 110km/hr lane and so frighteningly she had cars and trucks passing her at high speed just inches away.

Knowing how dangerous that section of the highway was the tow truck operator did not let any of his employees take the call but went himself to assist Sarah. While he started to secure the car, a passing truck side-swiped Sarah's vehicle and collided with them both killing them instantly.

Peter and his family later established the SARAH (Safer Australian Roads and Highways) Group with a mission to promote initiatives that will bring about improved road safety, as well as support those affected by road tragedy. He has worked tirelessly and successfully to effect change in policy and legislation, renew infrastructure and call for drivers to take responsibility for their actions on our roads and highways.



Andrew Morley

Andrew Morley is a popular Australia actor who has starred in Home & Away and Neighbours and is currently working as a fire fighter with the Country Fire Authority (CFA).

Andrew comes to RSE with a unique perspective; in his role with the CFA, he has had the unfortunate duty to attend many crash scenes. "Being a volunteer fire fighter since I was 15, I have come across a fair share of crashes on the roads".

He's also the survivor of a serious crash that occurred when he was a novice driver.

"At the age of 18, when I was driving to work, I fell asleep behind the wheel. I was quite tired after a party the night before, and as a result, had a micro sleep minutes after setting cruise control on the freeway. I woke startled by the rumble strip, panicked, over corrected and losing control my vehicle slid sideways towards oncoming traffic before flipping onto my roof on the medium strip", he said.

"We all have a responsibility when we are on the roads, and I have an added responsibility to be a role model for my supporters as they are often the most vulnerable", Andrew added.

In Andrew, RSE has an Ambassador who not only relates to our young audience, but also has a genuine motivation to make a real difference in this area.

> OUR PARTNERS

AUSTRALIA & NEW ZEALAND

Founding Partner



A Member of The Linde Group

There are no higher priorities for BOC as an organisation than the health and safety of their employees, customers, suppliers and the broader community. Road Safety Education Limited has great synergies with BOC's own safe driving culture and this is why BOC keenly support this youth education initiative for young drivers and their passengers.

BOC became the founding sponsor of the RYDA road safety education program in 2004 when it was a small yet growing local project in NSW. Through ongoing sponsorship, BOC is very pleased to be directly involved in helping to provide RYDA to over half a million students across Australia and New Zealand. Further information can be found at: boc-limited.com.au or boc-limited.co.nz.



Put yourself in
safe hands



Bridgestone has an ongoing commitment to supporting youth and promoting road safety. As one of the priority areas of its global CSR focus, 'Our Way To Serve', the company believes young people are the key to a bright and sustainable future and is passionate about ensuring young drivers are exposed to safe driving messaging as early as possible. Early education creates a better understanding of the significance of safe practices when driving and the need to reduce road trauma and fatality rates.

Bridgestone's own Safe Hands campaign has been incorporated into the RYDA program to demonstrate the important role that tyres play in staying safe on the road. Further information can be found at: bridgestonetyres.com.au or bridgestonetyrecentre.co.nz.

AUSTRALIA



Community Foundation

Toyota recognises that it has an important role to play in encouraging road safety. Through the Toyota Community Foundation, Toyota has been a long term partner of Road Safety Education Limited and the RYDA program. Toyota shares the RSE Vision of 'Zero Youth Road Trauma'.

With more Toyota vehicles on the road than any other brand, Toyota is committed to providing Australians with safe, quality vehicles that enable mobility for all. Toyota is continuously innovating to develop environmentally friendly, safe and intelligent vehicles that will enable mobility into the future. For more information go to: www.toyota.com.au



MTAA Super is the national super fund for the automotive industry. Since 1989, it has grown to become one of Australia's largest super funds and now drives the financial future of professionals from many trades and industries. MTAA Super has over 230,000 members and \$11.2 billion in funds under management.

Approximately two-thirds of MTAA Super's members work for businesses dedicated to keeping Australia moving. By supporting RSE and the RYDA program, MTAA Super is helping reduce incidents of road trauma and making our roads safer for everyone – now and in the future. For more information visit mtaasuper.com.au.



Boral joined RSE in F19

Boral is an international building and construction materials group with three strong divisions – Boral Australia, USG Boral in Asia and the Middle East and Boral North America. Their purpose is to Build Something Great™ across their international geographies with high-quality, innovative, sustainable building products and construction materials.

Boral has a long and proud history of supporting the communities in which they operate. They are committed to being a socially responsible and valued member of those communities and making a positive and sustainable contribution to their well-being. Boral are joining forces with RSE to work together to improve road safety for young people and the community. Visit boral.com.au for more information.

NEW ZEALAND

Co-Founding Partner



New Zealand Steel has been a Founding Co-Sponsor of the RYDA Program in NZ since 2007. They support RSE because of the impact road crashes have on young people and their families, and particularly because it's a great fit with their own safety culture. Priority areas for their community support are young people, education and safety, all of which RSE Programs encompass.

New Zealand Steel is part of the BlueScope Steel group of companies. Further information can be found at: nzsteel.co.nz.



AMI is part of the IAG Group, the largest insurance group in New Zealand and Australia. Founded in 1926 and with stores nationwide, AMI is strongly committed to road safety, supporting the role of education in reducing crashes and youth road trauma. AMI's approach to insurance for young drivers has great synergies with the RYDA program, treating young people as responsible road users, capable of making good choices. Further information can be found at ami.co.nz.

COMMUNITY PARTNER - ROTARY



Rotary Clubs in Australia
(ACT, NSW, QLD, SA, TAS, Vic & WA)
and New Zealand

The RYDA Program is coordinated in partnership with over 300 Rotary Clubs in Australia and New Zealand. The active support and close involvement of Rotary is a fundamental aspect in the success of the RYDA Program. There are over 1,370 Rotary Clubs with some 38,000 members located in communities across all cities and rural towns in Australia and New Zealand. Rotary provides the RYDA Program with access to a vast volunteer support base and introduction to many community groups including schools and local business organisations. RSE and Rotary Clubs across Australia and New Zealand are proud to be working together to help make our roads a safer place.

POLICE SUPPORTING RYDA



Police officers play a vital role in supporting the RYDA Program. RYDA's "Road Choices" session is a crucial part of the day which benefits greatly from the vast experience and knowledge of Police personnel. In NSW, a team of specially trained School Liaison Police are available to assist in the conduct of RYDA. The Queensland Police have endorsed the program, bringing RSE under their "Working Together" umbrella. In South Australia, the Commissioner has provided approval for SA Police to be actively involved in the presentation of RYDA. RSE also receives greatly valued support from Police in the ACT, Tasmania and New Zealand. RSE thanks Police officers across all jurisdictions for their active participation in RYDA and continued dedication in helping to make our roads a safer place.

NATIONAL ROAD SAFETY WEEK (NRSW)

We are a committed Principal Partner of National Road Safety Week in Australia and a member of the Yellow Ribbon National Road Safety Week in New Zealand, working with governments in both countries to create awareness and effect change. The week highlights the impact of road trauma and ways to reduce it.

During NRSW, national and state icons including Sydney Harbour Bridge are turned yellow and many emergency vehicles, fleet trucks, cars, motorbikes and bicycles display yellow ribbons to demonstrate a commitment to road safety. Many other local activities during NRSW across Australia and New Zealand demonstrate a widespread community commitment to honour those we have lost through road trauma and to demonstrate our pledge to drive safely. **Through raising awareness, National Road Safety Week presents as an effective opportunity to educate the community on how they can play their part in achieving a zero road toll.**



> OTHER SPONSORS & SUPPORTERS

Every RYDA venue relies on the support & involvement of local Rotary Clubs, businesses and community organisations.
Please see venue pages at rse.org.au for a comprehensive list of local sponsors and supporters.
We thank the following organisations for their ongoing support of local Programs.

Governments in all Jurisdictions (Australia & NZ)

Including:

Police authorities
Departments of Education
Department of Planning Transport & Infrastructure SA
Department of State Growth Tas,
Department of Transport & Main Roads Qld
Transport for NSW, Centre for Road Safety
Justice and Community Safety Directorate ACT
New Zealand Transport Agency
Roads and Maritime Services NSW

Educational and Community Groups

Brain Injury Association NZ (*Central Districts, Nelson, Northland*)
Brain Injury Association Tasmania
Headspace
The Disability Trust (Headway)
Headway North West (*Tasmania*)
North Coast Brain Injury Rehabilitation Service
NSW Ambulance
PBF Australia
PCYC
People Potential NZ (*Northland*)
Road Trauma Support (*Tasmania*)
Tasmanian Acquired Brain Injury Service
YouthSafe

Corporations, Clubs and Foundations

Major Contributors - Australia

Bass Coast Cycle Challenge
Interlink Road Pty Ltd
LTrent Driving School
NSW 2018 Club Grants (*Bankstown District Sports Club Limited, Bathurst RSL Club Limited, Bathurst Panthers, Chatswood RSE Club Ltd, Club Condell Park, Club Ryde, Club Sapphire Merimbula, Diggers Wallsend, Dubbo RSL Memorial Club, Guildford Leagues Club, Hornsby RSL Club, Leeton Soldiers Club, Liverpool Catholic Club, Magpies Waitara, Merimbula RSL, Mounties Group, Orange Ex-Services' Club, The Shellharbour Club*)
Qld Gambling Community Benefit Fund
Rightway Driving School
The Rotary Club of Epping
Royal Automobile Association of South Australia Inc
Royal Automobile Club Tasmania
Sydney International Regatta Centre
Sydney Olympic Park Authority
UPS

Major Contributors - New Zealand

Alexander Group
BDH Holdings
Community Organisation Grant Scheme (COGS) (*Auckland City, Canterbury Rural, Far North, Horowhenua, Manukau, Nelson, Papakura/Franklin, Rodney/North Shore, Southland, Wairarapa, Waitakere, Whangarei/Kaipara, Whitiireia*)
The Rotary Club of Henderson
The Lion Foundation
NZ Lotteries Community Grant
Proactive Drive Youth Driver Education Trust NZ
The Warehouse (*Auckland Botany Downs, Auckland West City, Blenheim, Christchurch Riccarton, Christchurch South City, Dargaville, Feilding, Greymouth, Invercargill, Masterton, Motueka, Nelson, Palmerston North, Richmond, Takanini, Timaru, Whangarei*)

We thank the many **councils, governments, corporations, organisations, clubs** and **foundations** for financial and in-kind donations, the **schools** who continue to prioritise road safety education for their students, the **teachers** who coordinate and attend the excursion, the **facilitators** who give their time to train for and deliver the sessions and the hundreds of individual **Rotary volunteers** who give their time tirelessly

Local Government

RYDA enjoys strong support from local councils at many venues.

Significant, ongoing, financial support has been provided by:

Ashburton District Council, Bathurst Regional Council, Burdekin Shire Council, Campbelltown City Council, Central Coast Council, City of Tea Tree Gully, Clare & Gilbert Valleys Council, Clarence Valley Council, Cowra Shire Council, Douglas Shire Council, Dubbo City Council, Eurobodalla Shire Council, Fraser Coast Regional Council, Hawkesbury City Council, The Hills Shire Council, Horizons Regional Council (*Manawatu*), Kapiti District Council, Limestone Coast Local Government Association, Logan City Council, Marlborough District Council, Masterton District Council, Mid-Coast Council, Nelson City Council, Orange City Council, Road Safe Southland, Road Safe Northland, Sunshine Coast Regional Council, Tasman District Council, Timaru District Council, Town of Gawler, Townsville City Council, The City of Salisbury, Wairarapa Road Safety Council, Warrumbungle Shire Council

Corporations, Clubs and Foundations

Other Supporters

ACE Traffic Control, Adelaide Bank, ANZ Bank (*Newcastle*), Australian Driver Trainer Association, Bank SA, Barossa Valley Toyota, Bega Valley Motors, Bendigo Bank (*Modbury, Mt Gambier, Tewantin, Adelaide*), Black Toyota, Brian Hilton Motor Group, Bruce Harris Construction, Burdekin TAFE, Calare Academy of Road Safety, Camp Clayton, Cardiff Toyota, Cargill Processing Ltd, CFS Tanunda, Charter Services Queensland, Chenery Memorial Trust, Chinchilla Show Grounds, CMI Toyota Portside, Coates Hire (*various locations*), Coastal Auto Group, Coastline Credit Union, Coonabarabran Race Course, Corners Toyota, Dargaville Racing Club, Dubbo City Toyota, Eastern and Central Community Trust, Fiat Car Club of Queensland Inc, Glasshouse Country Coaches, Grill'd Ltd (*Holden Hill*), HART (*St Ives*), House With No Steps (*Doonan*), IMB Bank (*Canberra*), Irelands New & Used Car Dealership, Sir John Campbell Residuary Estate, John Davis Motors, John Andrew Ford, Kembla Grange Turf Club, Lifetime Connect, MAIB, Maitland Toyota, Manawatu Toyota, Max Orman Toyota, McIlroy Auto Group, McLeod Office Furniture, The Meadows Greyhound Community Grant Fund, Mike Blewitt and Coffs Coast Isuzu Ute, Mike Carney Toyota, Moruya Jockey Club, Mortor Accidents Insurance Board (*Tas*), NAB Victor Harbor, NB&A Group, New Hope Coal (*Oakley*), Newcastle Permanent Building Society, Noosa Heads Surf Life Saving Club, Noosa Region SES, North Coast Heavy Towing, Northpoint Toyota, NRMA (*Central Coast*), Oakey Trade & Technical Centre, O'Halloran Motors, One Foundation, Orange Driving School, Orange PCYC, Panthers Bathurst, PD&M Gazette, Peter Kittle Toyota, Plaza Holden, Pub Charity Limited, Queensland Ambulance, Rapid Relief Team (*NZ*), safe365 (*NZ*), Sandown Greyhound Racing Club, Sapphire Club Kart Club, Smiths Mid North Motor Co, Southern Cross Austereo, Sprayrite, Sprint Auto, Steinborner Holden, Sunshine Coast Turf Club, Sunshine Toyota, Surf Life Saving Qld, Sutton Road Training Centre (*ACT*), Tablelands Driver Training, Taree Holden, Taree Wingham Race Club, Taylor Automotive, Tewantin Noosa RSL, Tocal College Campus (*Paterson*), Toowoomba Turf Club, Toyota Cornes Unley, Trust House Foundation, The Trusts Arena (*Waitakere*), Warkworth Community Centre, Wippels Autos, Wyong Race Club, Z Energy (*Glen Innes*)

individual giving

Rebecca Cook, Gary Ingram, Port Stephens Classic Automobile Association, Morgan Wass



> GROUP DIRECTORY

Road Safety Education Limited

Directors - Australia

Kerry Chikarovski B.Ec LLB – Chair is the former Leader of the NSW Parliamentary Liberal Party.

A T (Terry) Birss CA(NZ), FCIS, FGIA, FIPA – CEO/Managing Director, previously Chairman since incorporation.

John Loughlin is Proprietor of a construction company specialising in facilities for community groups including schools.

Paul Pixton Dip FP, JP is the MD of a general insurance company.

Dr Edward (Ned) Boyce BA LLB (ANU) FAICD is a Senior Consultant to Hunt & Hunt practising in property and commercial law.

Lynne Wilkinson BA Hons Grad Dip Fin Mgt is a company director and former CEO of The Australian Companies Institute Limited (AUSBUY).

Dr Stuart Boland AM MB BS FRCS FRACS FACS FAMA FAICD is a retired surgeon and former Chair of AVANT (medical indemnity insurer).

Directors - New Zealand

A T (Terry) Birss

Alistair Coleman is a retired CEO.

Ru Tauri is the former GM, RSE NZ. Currently working with Statistics NZ.

Advisory Council

Professor Barry Watson, PhD is an Adjunct Professor in the Faculty of Health at the Centre for Accident Research and Road Safety - Qld (CARRS-Q) and responsible for the overall management and strategic direction of the Centre.

Dr Neale Kinnear, PhD, BSc (Hons), CAD is the Principal Psychologist for the Transport Research Laboratory of UK engaged in the study of human behaviour and transport.

Dr Marilyn Johnson, PhD is a Senior Research Fellow in the Institute of Transport Studies at Monash University. She is also the Research Manager at the Amy Gillett Foundation.

Mary Chamberlain MNZM, EMPA, B Ed is a director of Evaluation Associates and a consultant. As a thought leader in curriculum and assessment, Mary is one of New Zealand's most highly respected educators.

Ambassadors

Peter Frazer is the President of SARAH (Safer Australian Roads and Highways), a Principal Partner of the Yellow Ribbon National Road Safety Week in Australia.

Andrew Morley is an Actor, Speaker and Entrepreneur, best known for his work on Neighbours. He currently works for the Country Fire Authority as a fire fighter.

Foundation

Patron

The Honourable Sir William Deane AC KBE is the former Governor-General of Australia (1996-2001) and Justice of the High Court of Australia (1982-1995).

Vice Patrons

Gillian Moore AO BA MA DipEd, Principal of the Pymble Ladies' College from 1989 until 2007.

Kenneth Moroney AO, APM, MBA, Commissioner of the NSW Police Force from 2002 until 2007.

A/Prof Dr Brian Oowler MB BS BSc(Med)(Hons) PhD FRACS, an adult and paediatric neurosurgeon based at Westmead Hospital and former President of the AMA.

The Hon James Wood AO, QC, Former Judge of the NSW Supreme Court and currently Chairman of the NSW Law Reform Commission.

Geoffrey McIntyre AM, PSM (S'pore), FAICD, F.Fin retired as Chairman of the Bank of China Australia Limited and previous Chair of RSE Ltd.

Dr Ronald (Keith) Barton BSc (Hons 1), PhD, FTSE retired after a career in manufacturing in Australia and the USA with companies such as BHP, CSR & James Hardie Industries.

Directors of the Corporate Trustee

**Dr Stuart Boland
A T (Terry) Birss
Edward (Ned) Boyce**

as at 1 December 2018

In Australia & New Zealand
Founding Partner



In Australia



In New Zealand
Co-Founding Sponsor NZ



Community Partner



working

TOWARDS
ZERO

road fatalities

© Copyright 2018

This report has been produced by Road Safety Education Limited. Copyright is held by Road Safety Education Limited. RSE's Programs, or any part of them, including the session materials may not be presented except in the context of the RSE Road Safety Education Program by facilitators accredited by Road Safety Education Limited. No part of this report may be reproduced without written permission from Road Safety Education Limited.

making our roads a safer place

Australia

Road Safety Education Limited
ABN: 17 110 667 706

www.rse.org.au

Level 2, 10 Julius Avenue,
North Ryde NSW 2113
P 1300 127 642
P +61 2 8874 4332
E info@rse.org.au

New Zealand

Road Safety Education Limited
Registered Charitable Entity:
CC27875

www.rse.org.nz

PO Box 12876, Penrose,
Auckland 1642
P +64 21 545 030

E info@rse.org.nz